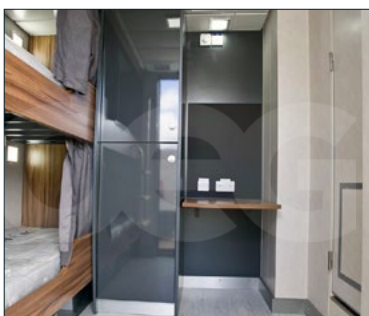


**ACCOMMODATION MODULES FOR RENTAL AND SALE**

OEG's comprehensive range of modules set a new standard in offshore sleep and living accommodation. Our fleet of world-class modules have raised the standard of temporary accommodation and reached new levels in terms of safety and quality. Feedback indicates that they exceed permanent accommodation standards.

Our modules are the most modern and advanced available on the market with carefully-planned interior configurations. All modules are certified to A60, DNV 2.7-1/EN 12079 & ABS standards, ensuring maximum safety and comfort for inhabitants. Temporary accommodation modules can be configured to suit your requirements as offices, recreation rooms, laundries and locker rooms etc.

- 6m, 7.6m, 10.3m sizes
- A60 certified
- DNV 2.7-1 / EN 12079 & ABS
- Ideal for limited deck space
- Stackable up to four high
- Fast hook-up
- Linkable/adaptable to form accommodation complexes
- Flexible interiors
- Available from stock



6m Accommodation Module



7.6m Accommodation Module



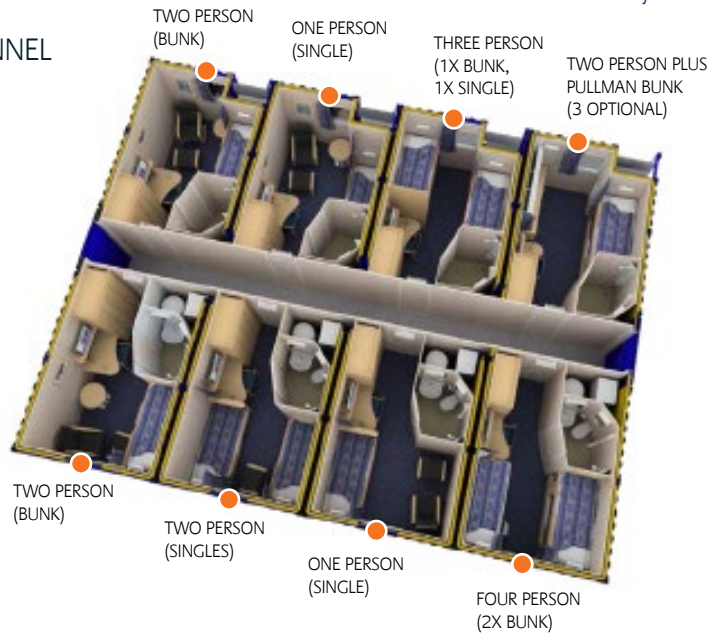
10.3m Accommodation Module

A60 ACCOMMODATION OFFERING SAFE AND COMFORTABLE LIVING SPACE FOR 1, 2, 3, 4 or 8 PERSONNEL

### KEY FEATURES

- > Structural design: DNV 2.7-1, EN 12079 & ABS
- > A60 fire rated
- > 2 sets of bunks or single beds
- > Lockers including hanging and shelving space
- > En-suite wet unit
- > Shower with integral hot water system
- > Desk & workspace, including pin board and chair
- > Integral Heating, Ventilation and Air Conditioning (HVAC) system with individual room control
- > Combined pressurisation, fire and gas protection system
- > High quality fixtures and fittings
- > Attractive relaxing decor and soft furnishings
- > Quick and easy hook-up to on-board services
- > All modules designed for easy stacking
- > 10.3m modules designed for easy interlinking
- > User selectable 380V/415V/440V/460V/480V, (50Hz or 60Hz), 3 phase & Earth main power
- > Nominal load current 40A per phase @ 380V
- > Suggested vessel protection, 63A motor rated circuit breaker
- > Modules provide a variety of volt-free signal contacts which the vessel can incorporate into their own alarm system
- > Modules available for rental or sale

### Flexible Cabin Layouts



Offshore Accommodation Complex

### TECHNICAL SPECIFICATION

SIZE / TYPE	EXTERNAL DIMENSIONS	MAX. GROSS WEIGHT
6m (20ft) Offshore Accommodation Module	6,058mm x 2,438mm x 2,896mm 19' 10" x 8" x 9' 5"	9,500 kg 20,944 lbs
7.6m (25ft) Offshore Accommodation Module	7,680mm x 3,520mm x 3,351mm 25' 2" x 10' 7" x 10' 10"	12,000 kg 26,455 lbs
10.3m (34ft) Offshore Accommodation Module	10,312mm x 3,312mm x 3,306mm 33' 9" x 10' 8" x 10' 8"	16,000 kg 35,274 lbs

E & OE

All dimensions and weights are accurate at the time of creation. Please check exact specifications of units when ordering.



For rental and sales enquiries e: [sales@oegoffshore.com](mailto:sales@oegoffshore.com)